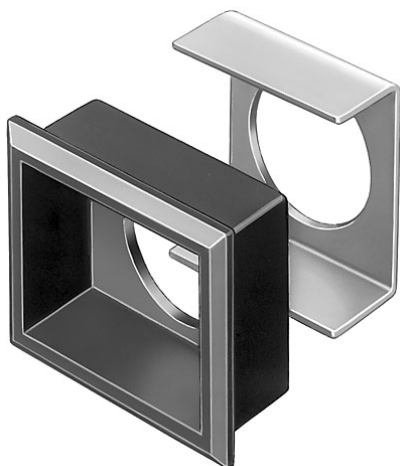


EAO – Your Expert Partner for Human Machine Interfaces

61-9931.0 - Front bezel set for indicator,pushbutton, illuminated pushbutton, flush design

61-9931.0 - Front bezel set for indicator,pushbutton, illuminated pushbutton, flush design



Attention: The preview is based on a sample product. This can differ from your current configuration.

Mounting

Mounting cut-out
Design

21 mm x 27 mm
flush

Front

Front bezel material
Front bezel colour
Front dimension
Front shape

Plastic
black
24 mm x 30 mm
rectangular

Other Attributes

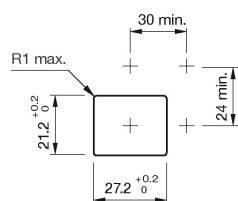
Weight

0,008 kg

EAO – Your Expert Partner for Human Machine Interfaces

61-9931.0 - Front bezel set for indicator, pushbutton, illuminated pushbutton, flush design

Mounting cut-outs



Additional information

Pitch of the front plate mounting holes must agree with the printed circuit board holes $\varnothing 3.5$